



www.anchorchaincable.com

www.dalaoqinang.com

中运锚链（江苏）有限公司

China Shipping Anchor Chain (Jiangsu) Co., Ltd.

地址：泰兴市曲霞镇工业集聚区霞曙路777号

No.777,Xiashu Road,Industrial Agglomeration Area, Quxia Town,Taixing City

Tel : 0523-86969999

E-mail: sales@anchorchaincable.com



中运锚链（江苏）有限公司

China Shipping Anchor Chain (Jiangsu) Co., Ltd.

企业简介

Company Introduction

中运锚链（江苏）有限公司是专业生产船用锚链、海洋系泊链、大规格矿用链、大规格不锈钢链条、大规格起重链条、焊接钢板锚、钢制浮筒的大型重工企业。

制链范围：链径22MM~162MM船用锚链、海洋系泊链、矿用链、不锈钢链、G80/G100级起重链及其他各种大规格链条。

执行标准：国际ISO1704-2007、中国GB/T 549-2017、各船级社规范、及为满足用户的其他非标准产品。

产品认可：公司通过了ISO9001质量体系认证，2008年通过职业健康安全管理体系和环境管理体系的认证；获得ABS、BV、CCS、ZC、CR、DNV-GL、KR、LR、NK、RINA和RMRS等多个国际船级社的认可，矿用链获得煤安认证。

生产设备：5#全自动制链机组、6#全自动制链机组、8#全自动制链机组、10#全自动制链机组、11#全自动制链机组、立式锚链调质炉、2000吨拉力试验机、金属切削机床、力学性能试验机和抛丸机等现阶段最先进的生产设备。

公司现锚链及其他链条类年产能达25万吨，其中船用锚链及海洋系泊链达15万吨，大规格矿用链、大规格不锈钢链条、大规格起重链条及其他链条类达10万吨；其中66.8%的产品出口。

公司常年备有大量的锚链库存及原材料库存，对于紧急需要更换锚链的客户我们承诺在3天内出厂。中国、东南亚所有港口我们提供锚链、锚安装维修服务。

公司采用具有先进的全自动闪光焊接技术和全自动热处理系统，在全球目前阶段属领先水平。拥有研究级高级工程师、高级工程师及工人技师为骨干的技术团队26人和质量管控团队15人，公司员工总规模289人。我们可以针对客户的不同需求，延长我们的产品质量期，船用锚链我们最多可以给出2-8年质保，质保期内出现任何质量问题免费换新。因为我们对自己的产品质量有信心，所有我们可以承诺！

公司坚持以技术及满足客户需求和产品品质提升为公司第一目标，以让我们平台的所有参与者快乐为公司使命；公司时刻以顾客需求为焦点，用优质的产品、周到的服务取信于国内外广大客户。

China Shipping Anchor Chain (Jiangsu) Co., Ltd. is a large heavy industry enterprise specializing in the production of marine anchor chains, marine mooring chains, big size mining chains, big size stainless steel chains, big size lifting chains, welded steel plate anchors, and steel buoys.

Chain making range: chain diameter 22MM~162MM marine anchor chain, marine mooring chain, mining chain, stainless steel chain, G80/G100 grade lifting chain and various other big size chains

Standard: International ISO1704-2007, Chinese GB/T 549-2017, regulations of various classification societies, and other non-standard products to satisfy users.

Product recognition: The company has passed the ISO9001 quality system certification, and passed the occupational health and safety management system and environmental management system certification in 2008; obtained ABS, BV, CCS, ZC, CR, DNV-GL, KR, LR, NK, RINA and RMRS etc. international Recognized by classification societies, the mining chain has obtained coal safety certification.

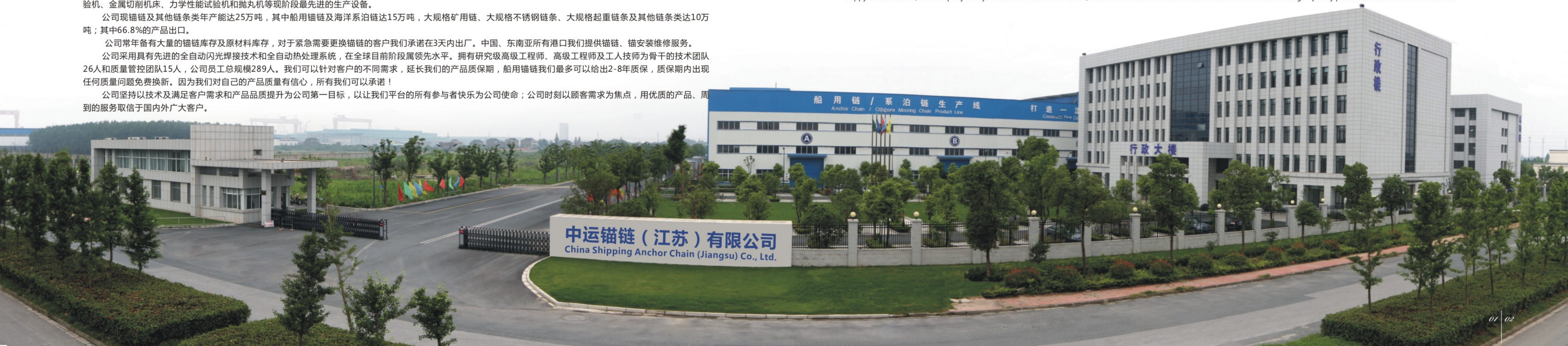
Advanced production equipment: 5# automatic chain making unit, 6# automatic chain making unit, 8# automatic chain making unit, 10# automatic chain making unit, 11# automatic chain making unit, vertical tempering furnace, 2000-ton tensile testing machine, a metal cutting machine tool, mechanical performance testing machine and shot blasting machine etc.

The company currently has an annual production capacity of 250,000 tons of anchor chains and other chains, including 150,000 tons of marine anchor chains and marine mooring chains, and big size mining chains, big size stainless steel chains, big size lifting chains and other chains up to 100,000 tons; 66.8% of the products are exported.

The company has a large inventory of anchor chains and raw materials. For customers who urgently need to replace their anchor chains, we promise to ship out from the factory within 3 days. We also provide anchor chain and anchor installation and maintenance services at all ports in China and Southeast Asia.

The company adopts the world's most advanced automatic flash welding technology and automatic heat treatment system, which is at the leading level in the world at this stage. There are professional teams including research-level senior engineers, senior engineers and worker technicians and QC teams including 15 persons. The total number of employees in the company is up to 289. We can extend the warranty period of our products according to the different needs of customers. We can provide a maximum of 2-8 years warranty for marine anchor chains. Any quality problems within the warranty period will be replaced free of charge. We have confidence in the quality of our products!

Our company insists on taking technology and meeting customer needs and product quality improvement as the company's first goal, and making all participants of our platform happy as its mission; The company always focuses on customer needs, and wins the trust of customers at home and abroad with high-quality products and considerate service.



工艺流程

Manufacturing Process

Step 1

Cutting

下料



Step 2

Heating

加热



Step 3

Bending

编环



Step 4

Flash Butt Welding

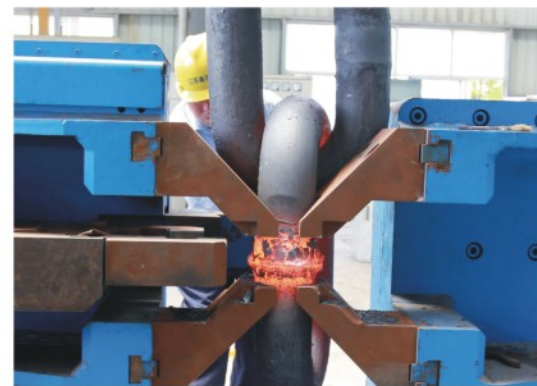
闪光焊接



Step 5

Trimming

去刺



Step 6

Shaping Stud Setting

整形 压档



Step 7

Heat Treatment

热处理



Step 8

Tensile Testing

拉力试验



Step 9

Shot Blasting

表面抛丸



Step 10

NDT 无损探伤



磁粉探伤 MT



超声波探伤 UT

Step 11

Painting 浸漆



Step 12

Delivery 交货



锚链和附件 Anchor Chain and Accessories

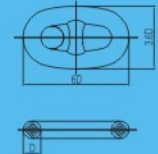


产品图样

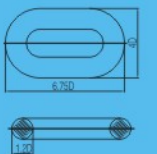
Drawings of Products



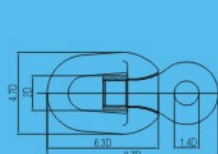
COMMON LINK=C (普通链环)



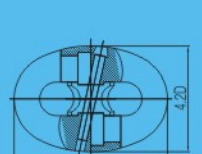
END LINK=E (末端环)



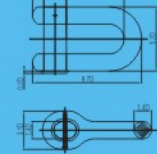
SWIVEL=SW(转环)



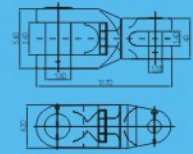
KENTER SHACKLE=KS(肯特卸扣)



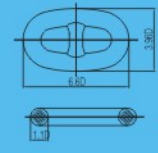
END SHACKLE =ES(末端卸扣)



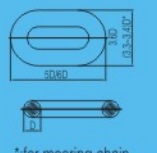
ANCHOR SWIVEL SHACKLE (a)=
A.SW.S(a)(A型转环卸扣)



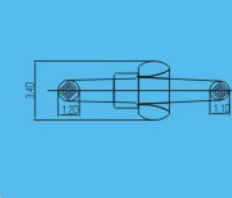
ENLARGED LINK=EL (加大链环)



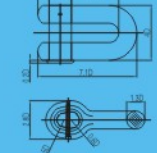
STUDLESS LINK=SL (无档环)



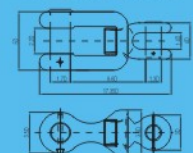
*for mooring chain



JOINING SHACKLE =JS(连接卸扣)



ANCHOR SWIVEL SHACKLE (b)=
A.SW.S(b)(B型转环卸扣)



Forelock shackle



Pear Shaped Link



三眼板
Triangle Plate(TP)



Buoy Shackle
Type "A"



Buoy Shackle
Type "B"

锚链及配件、系泊链及配件试验负荷

Testing Load of Anchor Chain, Mooring Chain and Accessories

公制单位: MS Units

链径 Diameter Of Chain mm	船用锚链 ANCHOR CHAIN						海洋系泊链 OFFSHORE MOORING CHAIN								
	ABS.BV.CCS.CR.DNV.GL. KR.LR.NK.RINA.RMRS						API			ABS/DNV			ABS/DNV		
	Grade2		Grade3		ORQ		ABS C/EL/E	DNV ABS C/EL/E/SL	ABS/DNV C/EL/E/SL	ABS/DNV SL		C/EL/E/SL	C/EL/E	ABS/DNV SL	
	拉力负荷 PL C=0.098	破断负荷 BL C=0.0137	拉力负荷 PL C=0.0137	破断负荷 BL C=0.0196	拉力负荷 PL C=0.014	破断负荷 BL C=0.0211	拉力负荷 PL C=0.0148	拉力负荷 PL C=0.0156	破断负荷 BL C=0.0223	拉力负荷 PL C=0.0180	拉力负荷 PL C=0.0174	破断负荷 BL C=0.0249	拉力负荷 PL C=0.0216	拉力负荷 PL C=0.0192	破断负荷 BL C=0.0274
12.5	66	92	92	132	-	-	-	-	-	-	-	-	-	-	
14	82	116	116	165	-	-	-	-	-	-	-	-	-	-	
16	107	150	150	216	-	-	-	-	-	-	-	-	-	-	
17.5	127	179	179	256	-	-	-	-	-	-	-	-	-	-	
19	150	211	211	301	-	-	-	-	-	-	-	-	-	-	
20.5	175	244	244	349	-	-	-	-	-	-	-	-	-	-	
22	200	280	280	401	-	-	-	-	-	-	-	-	-	-	
24	237	332	332	476	-	-	-	-	-	-	-	-	-	-	
26	278	389	389	556	-	-	-	-	-	-	-	-	-	-	
28	321	449	449	642	-	-	-	-	-	-	-	-	-	-	
30	368	514	514	735	-	-	-	-	-	-	-	-	-	-	
32	417	583	583	833	-	-	-	-	-	-	-	-	-	-	
34	468	655	655	937	668	1007	706	745	1064	859	831	1188	1031	916	
36	523	732	732	1050	746	1124	789	832	1189	960	928	1327	1151	1022	
38	581	812	812	1160	828	1248	876	923	1319	1065	1029	1473	1278	1135	
40	640	896	896	1280	914	1376	967	1019	1456	1176	1136	1626	1411	1253	
42	703	981	981	1400	999	1513	1056	1114	1592	1285	1242	1777	1542	1370	
44	769	1080	1080	1540	1097	1654	1160	1223	1748	1411	1364	1951	1693	1503	
46	837	1170	1170	1680	1194	1800	1263	1331	1902	1535	1484	2124	1843	1636	
48	908	1270	1270	1810	1295	1952	1369	1443	2063	1665	1610	2304	2037	1775	
50	981	1370	1370	1960	1400	2110	1480	1561	2230	1800	1743	2490	2160	1918	
52	1060	1480	1480	2110	1508	2273	1594	1682	2402	1939	1877	2682	2327	2066	
54	1140	1590	1590	2270	1620	2441	1712	1806	2580	2083	2017	2881	2499	2219	
56	1220	1710	1710	2430	1735	2615	1834	1935	2764	2231	2160	3086	2677	2378	
58	1290	1810	1810	2600	1851	2794	1960	2068	2953	2383	2308	3297	2860	2540	
60	1380	1940	1940	2770	1976	2978	2089	2203	3147	2540	2460	3514	3048	2708	
62	1470	2060	2060	2940	2101	3166	2221	2343	3347	2701	2616	3737	3242	2879	
64	1560	2190	2190	3130	2230	3360	2357	2486	3551	2867	2776	3965	3440	3055	
66	1660	2310	2310	3300	2361	3559	2496	2633	3761	3036	2940	4200	3643	3235	
68	1750	2450	2450	3500	2496	3762	2639	2784	3976	3209	3108	4440	3851	3420	
70	1840	2580	2580	3690	2631	3970	2785	2938	4196	3387	3289	4685	4064	3610	
73	1990	2790	2790	3990	2847	4291	3010	3175	4535	3660	3545	5064	4392	3900	
76	2150	3010	3010	4300	3066	4621	3242	3419	4884	3942	3818	5454	4731	4206	
78	2260	3160	3160	4500	3216	4847	3400	3587	5123	4135	4004	5720	4962	4411	
81	2410	3380	3380	4820	3446	5194	3643	3843	5490	4431	4291	6130	5317	4727	
84	2580	3610	3610	5160	3683	5550	3893	4107	5866	4735	4585	6550	5682	5051	
87	2750	3850	3850	5500	3925	5916	4149	4377	6252	5046	4887	6981	6056	5383	
90	2920	4090	4090	5840	4173	6289	4412	4653	6647	5365	5196	7422	6439	5724	
92	3040	4260	4260	6080	4242	6544	4590	4842	6916	5582	5405	7722	6699	5955	
95	3230	4510	4510	6440	4599	6932	4862	5128	7326	5913	5726	8180	7096	6308	
97	3340	4680	4680	6690	4774	7195	5047	5323	7604	6138	5943	8490	7365	6547	
100	3530	4940	4940	7060	5040	7596	5328	5620	8028	6480	6275	8964	7776	6912	
102	3660	5120	5120	7320	5220	7868	5519	5821	8315	6712	6500	9285	8054	7160	
105	3850	5390	5390	7700	5495	8282	5809	6128	8753	7065	6842	9773	8478	7536	
107	3980	5570	5570	7960	5681	8561	6005	6334	9048	7304	7072	10103	8764	7791	

锚链及配件、系泊链及附件试验负荷

Testing Load of Anchor Chain, Mooring Chain and Accessories

英制单位：US Units

链径 Diameter Of Chain	船用锚链 ANCHOR CHAIN				海洋系泊链 OFFSHORE MOORING CHAIN											
	ABS.BV.CCS.CR.DNV.GL. KR.LR.NK.RINA.RMRS				API		ABS		DNV ABS		ABS/DNV		ABS/DNV		ABS/DNV	
	Grade2		Grade3		ORO		RO3	NVR3/RQ3	NVR3/RQ3	RO3S/NVR3S		RO4/NVR4		RO4/NVR4		
	拉力负荷 PL C=0.098 KN	破断负荷 BL C=0.0137 KN	拉力负荷 PL C=0.0137 KN	破断负荷 BL C=0.0196 KN	拉力负荷 PL C=0.014 KN	破断负荷 BL C=0.0211 KN	拉力负荷 PL C=0.0148 KN	拉力负荷 PL C=0.0156 KN	破断负荷 BL C=0.0223 KN	拉力负荷 PL C=0.0180 KN	拉力负荷 PL C=0.0174 KN	破断负荷 BL C=0.0249 KN	拉力负荷 PL C=0.0216 KN	拉力负荷 PL C=0.0192 KN	破断负荷 BL C=0.0274 KN	
111	4250	5940	5940	8480	6058	9130	6401	6755	9650	7789	7543	10775	9347	8309	11856	
114	4440	6230	6230	8890	6346	9565	6709	7077	10109	8159	7901	11287	9791	8704	12420	
117	4650	6510	6510	9300	6639	10005	7018	7402	10574	8535	8265	11807	10242	9105	12993	
120	4850	6810	6810	9720	6953	10452	7331	7733	11047	8916	8634	12334	10700	9511	13573	
122	5000	7000	7000	9990	7135	10753	7542	7956	11365	9173	8883	12690	11008	9785	13964	
124	5140	7200	7200	10280	7336	11057	7755	8175	11688	9433	9134	13048	11319	10062	14358	
127	5350	7490	7490	10710	7641	11516	8078	8515	12172	9825	9514	13951	11790	10480	14955	
130	5570	7800	7800	11140	7950	11981	8404	8858	12663	10222	9898	14140	12266	10903	15559	
132	5720	8000	8000	11420	8157	12294	8623	9090	12994	10488	10157	14509	12586	11187	15965	
137	6080	8510	8510	12160	8682	13085	9178	9674	13829	11163	10809	15442	13395	11907	16992	
142	6450	9030	9030	12910	9214	13887	9740	10268	14677	11847	11472	16389	14217	12637	18034	
147	6840	9560	9560	13660	9753	14670	10310	10869	15536	12540	12144	17348	15049	13377	19089	
152	7220	10100	10100	14430	10299	15522	10887	11477	16405	13242	12823	18318	15890	14125	20157	
157	7600	10640	10640	15200	11126	16768	11762	12090	17282	13950	13508	19297	16740	14880	21234	
162	7990	11180	11180	15980	11405	17189	12057	12708	18166	14663	14199	20284	17596	15641	22320	

锚链及配件、系泊链及附件试验负荷

Testing Load of Anchor Chain, Mooring Chain and Accessories

英制单位：US Units

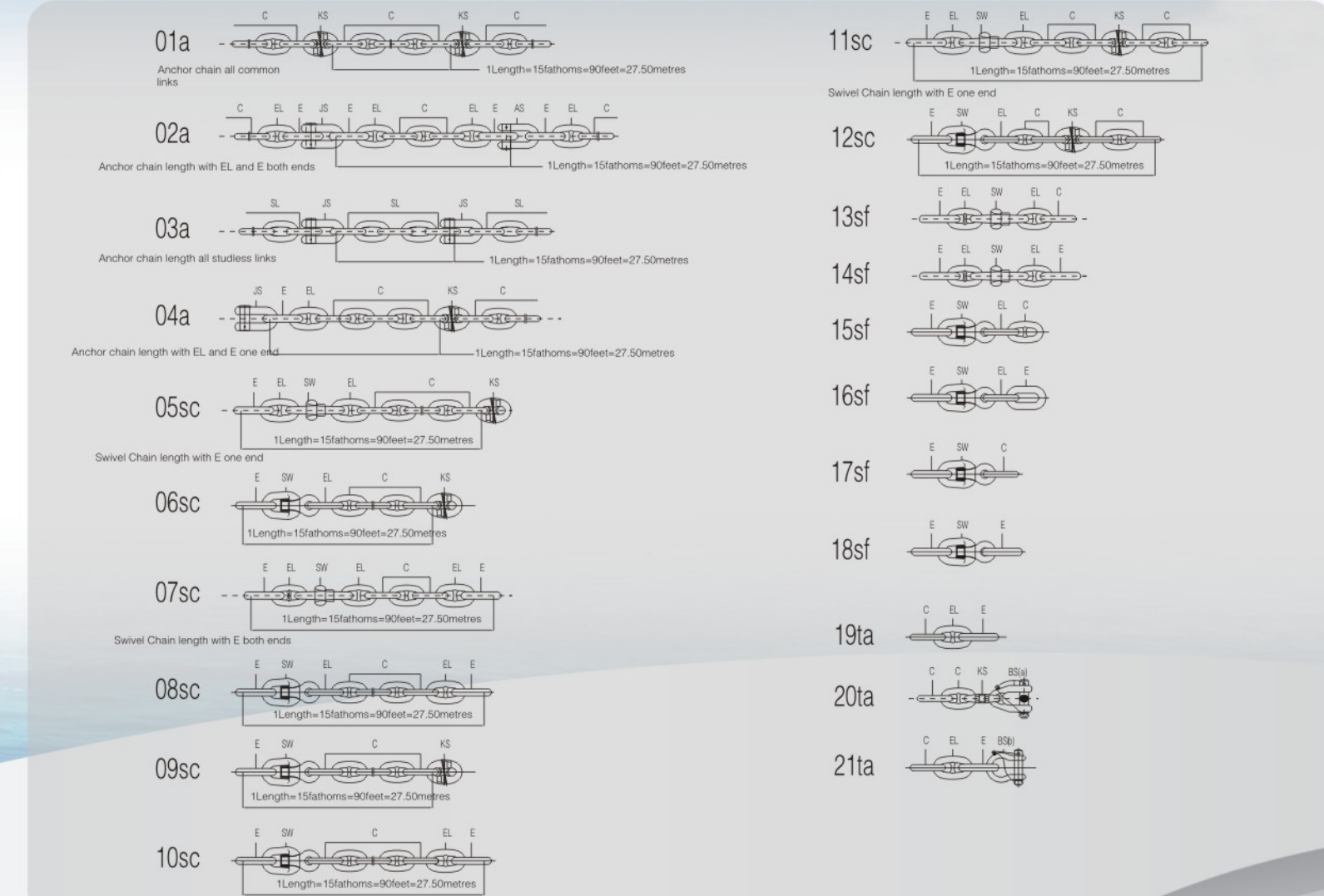
链径 Diameter Of Chain	船用锚链 ANCHOR CHAIN				海洋系泊链 OFFSHORE MOORING CHAIN											
	ABS.BV.CCS.CR.DNV.GL. KR.LR.NK.RINA.RMRS				API		ABS		DNV ABS		ABS/DNV		ABS/DNV		ABS/DNV	
	Grade2		Grade3		ORO		RO3	NVR3/RQ3	NVR3/RQ3	RO3S/NVR3S		RO4/NVR4		RO4/NVR4		
	拉力负荷 PL C=1422 lbf	破断负荷 BL C=1991 lbf	拉力负荷 PL C=1991 lbf	破断负荷 BL C=2844 lbf	拉力负荷 PL C=2030.5 lbf	破断负荷 BL C=3060.3 lbf	拉力负荷 PL C=2147 lbf	拉力负荷 PL C=2265.2 lbf	破断负荷 BL C=3236 lbf	拉力负荷 PL C=2610 lbf	拉力负荷 PL C=2527 lbf	破断负荷 BL C=3610 lbf	拉力负荷 PL C=3125 lbf	拉力负荷 PL C=2783.9 lbf	破断负荷 BL C=3977 lbf	
1/2	15300	21400	21400	30600												
9/16	19300	27000	27000	38600												
5/8	23700	33200	33200	47500												
11/16	28600	40100	40100	57300												
3/4	34000	47600	47600	68000												
13/16	39800	55700	55700	79500												
7/8	46000	64400	64400	91800												
15/16	52600	73700	73700	105000												
1	59700	83600	83600	119500												
1 1/16	67200	94100	94100	135000												
1 1/8	75000	105000	105000	150000												
1 3/16	83400	116500	116500	167000												
1 1/4	92200	129000	129000	184000												
1 5/16	101500	142000	142000	203000												
1 3/8	111000	155000	155000	222000	158187	238413	167263	176471	252101	203333	196867	281238	243454	216880	309829	
1 7/16	120500	169000	169000	241000	172361	259777	182251	192284	274691	221553	214507	306439	265269	236314	337592	
1 1/2	131000	183500	183500	262000	187095	281983	197829	208721	298172	240491	232843	332633	287944	256515	366449	
1 9/16	142000	198500	198500	284000	202381	305022	213993	225774	322534	260140	251868	359811	311471	277473	396390	

链径 Diameter Of Chain	船用锚链 ANCHOR CHAIN				海洋系泊链 OFFSHORE MOORING CHAIN											
	ABS.BV.CCS.CR.DNV.GL. KR.LR.NK.RINA.RMRS				API		ABS		DNV ABS		ABS/DNV		ABS/DNV		ABS/DNV	
	Grade2		Grade3		ORO		RO3	NVR3/RQ3	NVR3/RQ3	RO3S/NVR3S		RO4/NVR4		RO4/NVR4		
	拉力负荷 PL C=1422 lbf	破断负荷 BL C=1991 lbf	拉力负荷 PL C=1991 lbf	破断负荷 BL C=2844 lbf	拉力负荷 PL C=2030.5 lbf	破断负荷 BL C=3060.3 lbf	拉力负荷 PL C=2147 lbf	拉力负荷 PL C=2265.2 lbf	破断负荷 BL C=3236 lbf	拉力负荷 PL C=2610 lbf	拉力负荷 PL C=2527 lbf	破断负荷 BL C=3610 lbf	拉力负荷 PL C=3125 lbf	拉力负荷 PL C=2783.9 lbf	破断负荷 BL C=3977 lbf	
in	lbf	lbf	lbf	lbf	lbf	lbf	lbf	lbf	lbf	lbf	lbf	lbf	lbf	lbf	lbf	
1 5/8	153000	214000	214000	306000	218215	328885	230735	243437	347767	280492	271573	387961	335838	299181	427401	
1 11/16	166500	229000	229000	327000	234589	353564	248048	261704	373863	301540	291951	417072	361039	321631	459472	
1 3/4	176000	247000	247000	352000	251498	379048	265927	280568	400811	323274	312994	447134	387062	344814	492591	
1 13/16	188500	264000	264000	377000	268935	405330	284366	300021	428601	345689	334696	478136	413899	368721	526745	
1 7/8	201000	281000	281000	402000	286896	432399	303357	320057	457225	368775	357048	510068	441541	393346	561923	
1 15/16	214000	299000	299000	427000	305373	460247	322894	340670	486671	392526	380043	542918	469978	418679	598112	
2	227000	318000	318000	454000	324361	488865	342971	361853	516932	416932	403674	576676	499201	444712	635302	
2 1/16	241000	337000	337000	482000	343853	518243	363582	383598	547997	441988	427932	611331	529200	471437	673481	
2 1/8	255000	357000	357000	510000	363844	548373	384719	405899	579856	467684	452811	646873	559966	498845	712635	
2 3/16	269000	377000	377000	538000	384327	579244	406378	428750	612500	494013	478303	683290	591491	526928	752755	
2 1/4	284000	396000	396000	570000	405297	610849	428551	452144	645920	520968	504400	720572	623764	555679	793827	
2 5/16	299000	418000	418000	538000	426747	643178	451232	476704	680105	548540	531096	758708	656776	585088	835840	
2 3/8	314000	440000	440000	628000	448672	676222	474414	500532	715046	576721	558381	797687	690519	615147	878782	
2 7/16	330000	462000	462000	660000	471064	709972	498092	525514	750733	605505	586250	837499	724982	645849	922641	
2 1/2	346000	484000	484000	692000	493920	744418	522258	551010	787158	634883	614693	878133	760157	677184	967406	
2 9/16	363000	507000	507000	726000	517231	779553	546907	577016	824309	664847	643705	919578	796034	709145	1013064	
2 5/8	379000	53000	53000	758000	540993	815365	572032	603524	862177	695390	673276	961823	832603	741723	1059604	
2 11/16	396000	554000	554000	792000	565198	851847	597626	630528	900754	726504	703401	1004858	869857	774910	1107014	
2 3/4	413000	578000	578000	826000	589842	889899	623684	658020	940029	758181	734071	1048672	907784	808698	1155282	
2 13/16	431000	603000	603000	861000	614918	926783	650199	685994	979992	790414	765278	1093254	946377	843078	1204397	
2 7/8	449000	628000	628000	897000	640420	965218	677164	714444	1020634	823194	797016	1138593	985625	878042	1254345	
2 15/16	467000	654000	654000	934000	666341	1004287	704573	743362	1061945	856514	829276	1184680	1025519	913582	1305116	
3	485000	679000	679000	970000	692677	1043979	732419	772742	1103917	890365	862051	1231501	1066051	949689	1356698	
3 1/16	504000	705000	705000	1008000	719421	1084286	760696	802577	1146538	924742	895334	1279049	1107210	986356	1409079	
3 1/8	523000	732000	732000	1046000	746566	1125199	789400	832860	1189799	959634	929117	1327310	1148987	1023573	1462247	
3 3/16	542000	759000	759000	1084000	774107	1166708	818522	863584	1233692	995036	963393	1376275	1191374	1061333	1516190	
3 1/4	562000	787000	787000	1124000	802038	1208804	848055	894744	1278205	1030938	998153	1425933	1234361	1096288	1570897	
3 5/16	582000	814000	814000	1163000	830353	1251479	877995	926331	1323330	1067334	1033392	1476274	1277938	1138448	1626355	
3 3/8	602000	843000	843000	1204000	859045	1294723	908333	958340	1369057	1104215	1069100	1527285	1322096	1177787	1682552	
3 7/16	622000	871000	871000	1244000	8											

链径 Diameter Of Chain	船用锚链 ANCHOR CHAIN				海洋系泊链 OFFSHORE MOORING CHAIN											
	ABS,BV,CCS,CR,DNV,GL, KR,LR,NK,RINA,RMRS				API		ABS		DNV ABS		ABS/DNV		ABS/DNV		ABS/DNV	
	Grade2		Grade3		ORO		RQ3		NVR3/RQ3		RQ3S/NVR3S		RQ4/NVR4		C/EL/E/SL	
	拉力负荷 PL C=1422	破断负荷 BL C=1991	拉力负荷 PL C=1991	破断负荷 BL C=2844	拉力负荷 PL C=2030.5	破断负荷 BL C=3060.3	拉力负荷 PL C=2147	破断负荷 BL C=2265.2	拉力负荷 PL C=3236	破断负荷 BL C=2610	拉力负荷 PL C=2527	破断负荷 BL C=3610	拉力负荷 PL C=3125	破断负荷 BL C=2783.9	破断负荷 BL C=3977	
in	lbf	lbf	lbf	lbf	lbf	lbf	lbf	lbf	lbf	lbf	lbf	lbf	lbf	lbf		
5 1/8	1255000	1757000	1757000	2509000	1791221	2699666	1893992	1998263	2854661	2302431	2229212	3184588	2756742	2455838	3508340	
5 1/4	-	-	-	-	1865448	2811539	1972478	2081070	2972957	2397842	2321589	3316555	2870979	2557606	3653723	
5 3/8	1359000	1903000	1903000	2718000	1940436	2924558	2051768	2164726	3092465	2494232	2414913	3449876	2986388	2660418	3800597	
5 1/2	-	-	-	-	2016137	3038652	2131813	2249176	3213109	2591537	2509125	3584463	3102894	2764207	3948867	
5 5/8	1466000	2052000	2052000	2935000	2092502	3153747	2212559	2334369	3334812	2689697	2604163	3720232	3220423	2868907	4098439	
5 3/4	1520000	2128000	2128000	3039000	2169484	3269771	2293958	2420248	3457497	2788649	2699968	3857097	3338900	2974452	4249217	
5 7/8	-	-	-	-	2247033	3386651	2375957	2506761	3581087	2888331	2796480	3994971	3458250	3080776	4401108	
6	1629000	2280000	2280000	3257000	2325102	3504313	2458504	2593854	3705505	2988680	2893638	4133768	3578401	3187811	4554015	
6 1/8	-	-	-	-	2403641	3622686	2541550	2681472	3830674	3089635	2991382	4273403	3699276	3295492	4707846	
6 1/4	1684000	2357000	2357000	3367000	2482604	3741695	2625043	2769561	3956516	3191133	3089653	4413790	3820801	3403753	4862504	
6 3/8	1795000	2512000	2512000	3589000	2651941	3861269	2708932	2858069	4082955	3293113	3188389	4554842	3942903	3512527	5017896	

锚链连接形式

Arrangement of Anchor Chain



无档锚链试验负荷

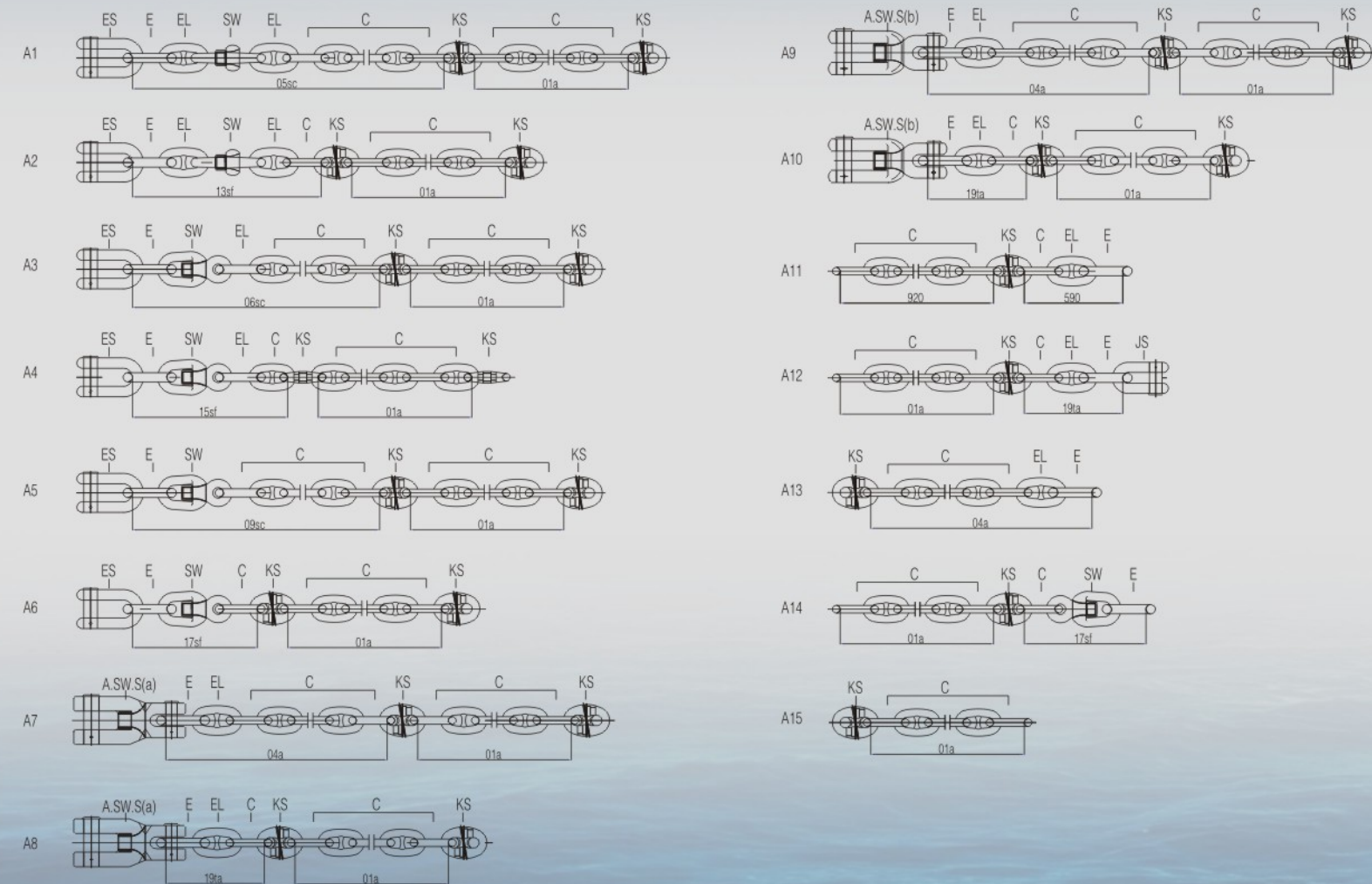
Testing Load of Studless Chain

公制单位：MS Units

链径 Diameter Of Chain	Grade1		Grade2		Grade3		质量近似值 Approx..mass(27.5m)
	拉力负荷 PL	破断负荷 BL	拉力负荷 PL	破断负荷 BL	拉力负荷 PL	破断负荷 BL	
mm	KN	KN	KN	KN	KN	KN	KG
6	6.62	13.32	9.30	18.60			21.45
7	9.02	18.13	12.60	25.20			29.15
8	11.78	23.68	16.50	33.00			38.23
9	14.90	29.97	20.90	41.80			48.40
10	18.40	37.00	25.80	51.60			59.68
11	22.26	44.70	31.20	62.40			72.33
12.5	28.75	57.81	41.20	82.60			93.50
14	34.78	69.93	51.00	101.90			117.15
16	47.10	94.72	66.20	132.30	92.42	184.83	152.90
17.5	56.35	113.31	78.89	157.78	110.55	221.10	182.80
19	66.42	133.57	93.60	187.20	130.32	260.64	249.50
20.5	77.33	155.49	108.64	217.27	151.70	303.42	275.40
22	89.06	179.08	125.40	250.90	174.40	349.40	328.60
24	105.98	213.25	149.90	298.90	207.90	415.80	385.00
26	124.38	250.12	175.40	350.80	244.00	488.00	449.10
28	144.26	290.08	203.80	406.70	283.00	566.00	516.70
30	165.60	333.00	234.20	467.50	324.90	649.80	589.40
32	188.42	378.88	265.60	531.20	369.60	739.30	664.60
34	212.70	427.72	299.90	599.80	417.30	834.60	752.90
36	238.46	479.52	336.10	672.30	467.80	935.70	861.20
38	265.70	534.28	374.40	748.70	521.30	1042.50	957.50
40	294.40	592.00	414.50	829.10	577.60	1155.20	1056.20
42	324.58	652.68	457.70	915.30	636.80	1273.60	1166.50
44	356.22	716.32	502.70	999.60	698.90	1398.00	1270.40
46	389.34	782.92	548.80	1097.60	763.90	1527.80	1396.60
48	423.94	852.48	597.80	1195.60	831.70	1663.50	1520.60
50	460.00	926.09	648.80	1299.60	902.50	1805.00	1650.00

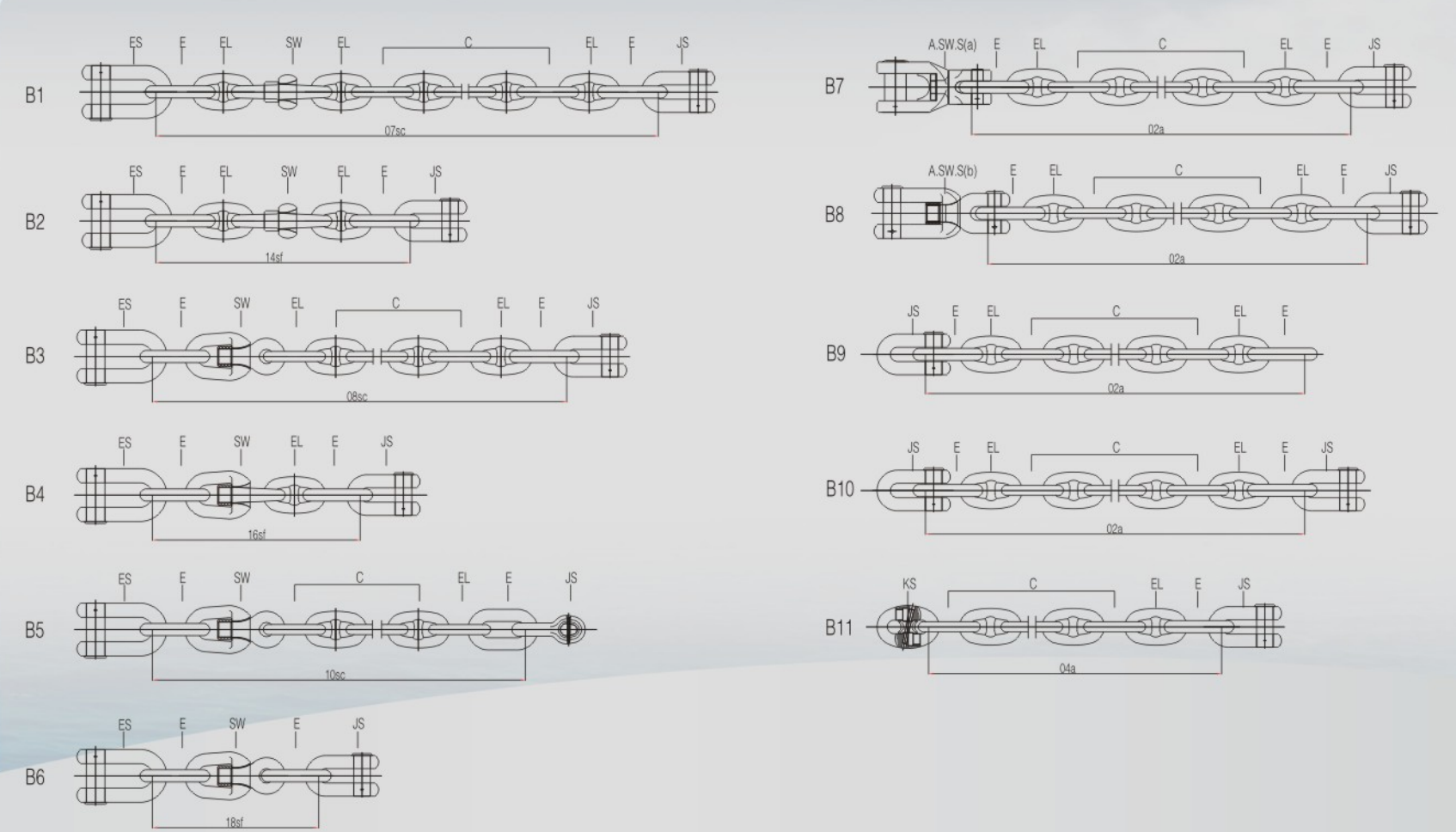
锚端和末端的连接形式(KS)

Joining Forms (KS) to Anchor and Locker Ends

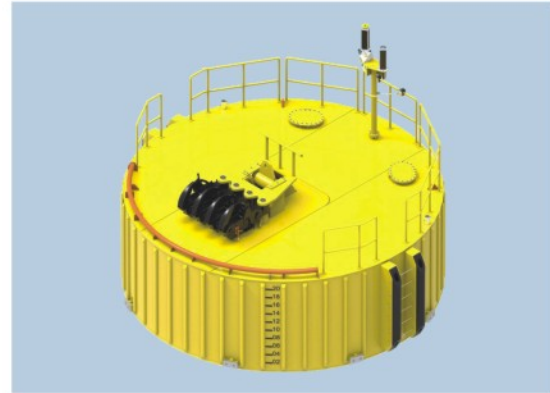


锚端和末端的连接形式(JS)

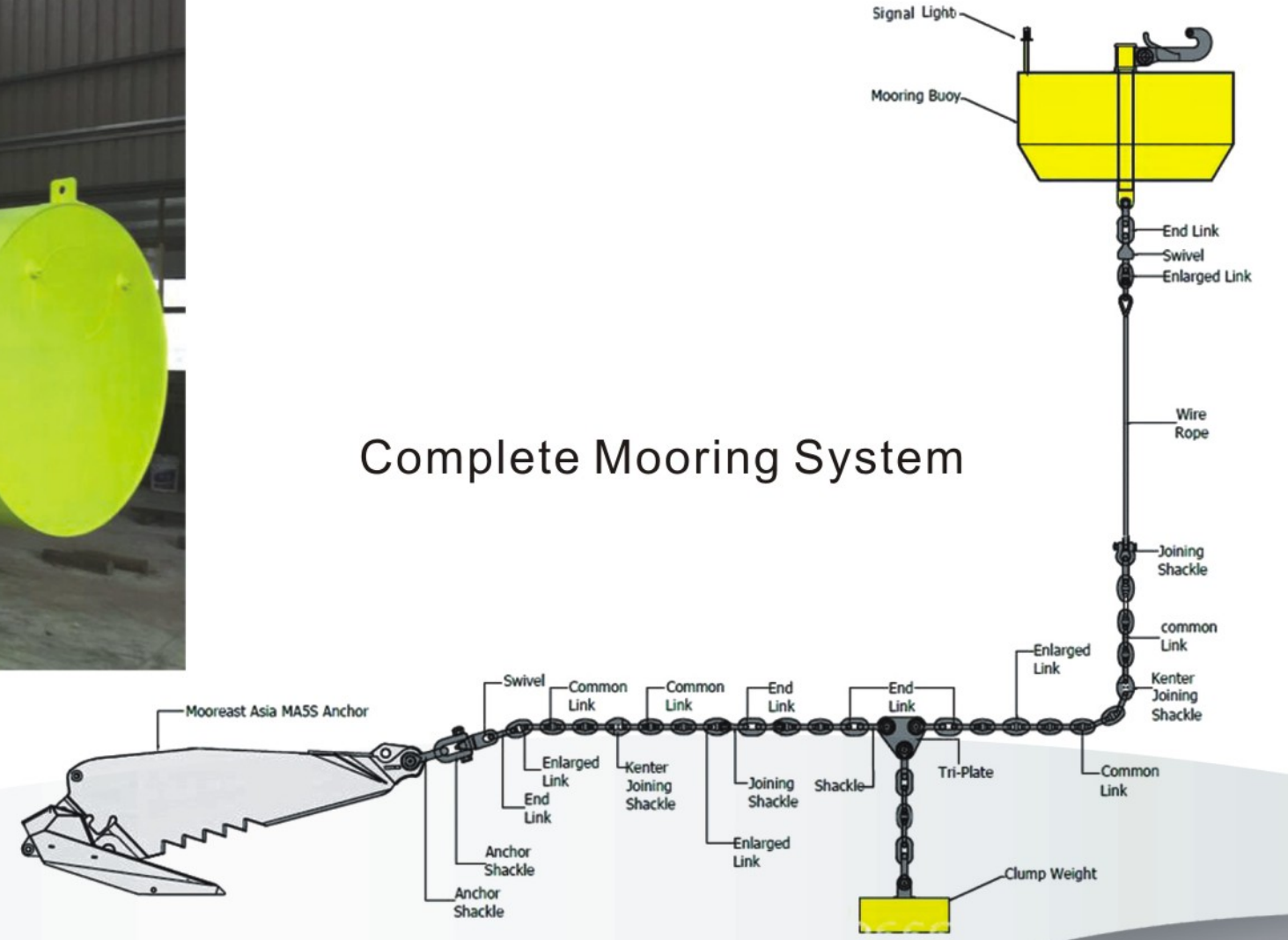
Joining Forms (JS) to Anchor and Locker Ends



钢制浮筒 Steel Buoys



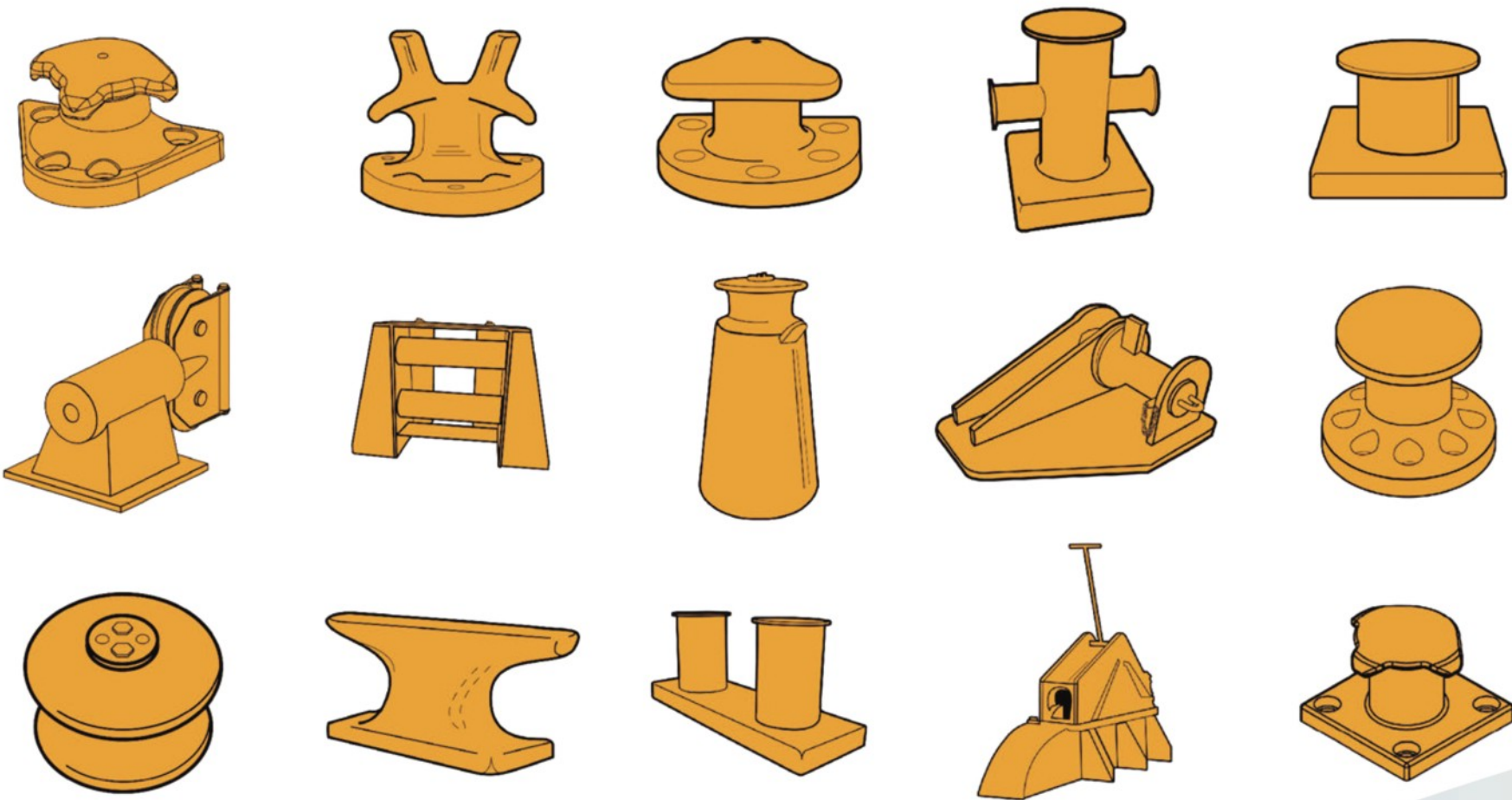
Complete Mooring System



船锚
Ship Anchor



船舶舾装件 Ship Outfitting



值得信赖的锚链制造商

Reliable anchor chain manufacturer

所有规格锚链1-3天交货；我们提供的不仅仅是锚链产品，而是终身的服务和一站式系泊系统解决方案。

All the sizes of anchor chains can be delivered within 1~3days.We not only provide the anchor chains ,but the lifelong service and one-stop mooring system solutions.

中运使命：以让我们平台的所有参与者快乐和满足客户所有合理需求为公司使命！

中运愿景：成为全球船用锚链、海洋系泊链、矿用链、大规格链条的行业领导者！

中运价值观：

我们努力创造优质的品牌和先进的技术；我们立志品质卓越；
我们力求创新，我们拥护变革-我们要做锚链行业最年轻的变革家；
我们成功的秘诀和最大的财富是我们拥有一帮努力、拼搏的员工；
我们致力于可持续发展、高度社会责任感和倡导公益活动；
与员工、供应商、客户和社会共享企业利润！

China Shipping Anchor Chain mission:To make all competitors happy and to meet all reasonable requirements for customers.

China Shipping Anchor Chain Vision:To become the industry lealer of global ship anchor chain, offshore mooring chain, mining chain, bigger size chains.

China Shipping Anchor Chain Values:

Trying best to creat high quality brand and improve advanced technology level; Determined excellent brand;Strive for innovation, support evolution, to be the yongest reformer;
The secret of our success and the greatest wealth is that we have a group of hard-working and struggle hard employees;
Committed to sustainable development, high degree of social responsibility and advocate public benefit activities; Share corporate profits with employees, suppliers, customers and society!

