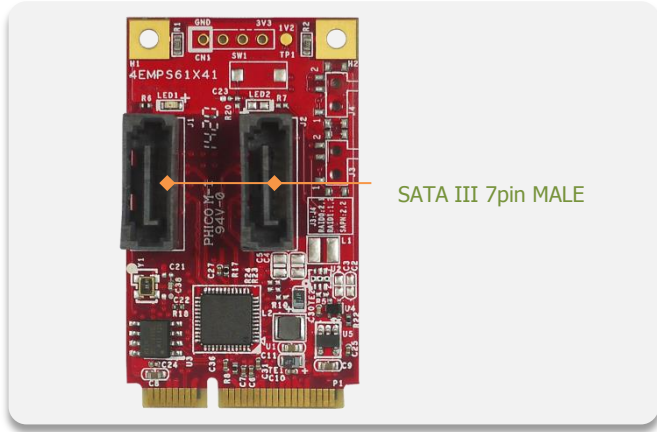


EMPS-3201

mPCIe to dual SATA III Module

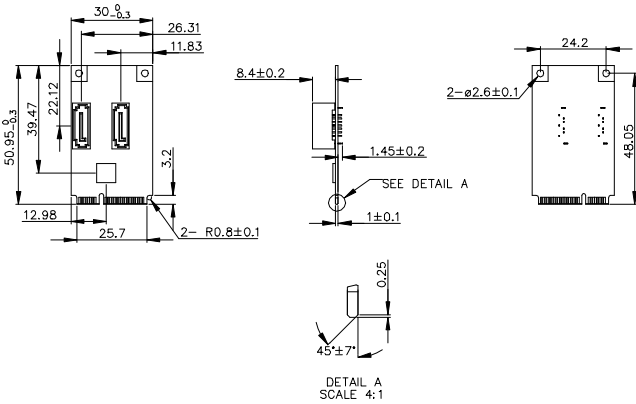


Features

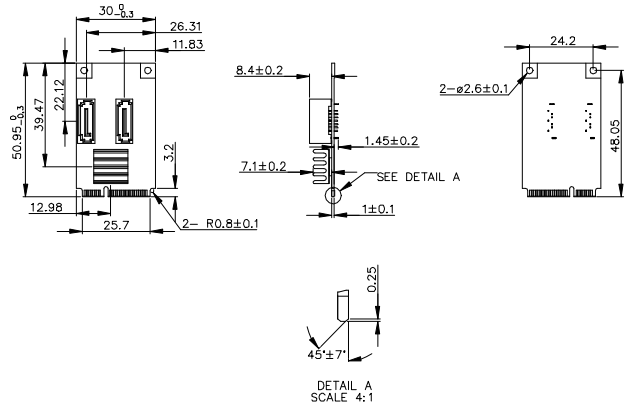
- mPCIe to dual SATA III ports.
- Low power consumption.
- Supports AHCI, Port-Multiplier.
- Supports Native Command Queuing
- Supports wide temp
- 30μ golden finger, 3 years warranty
- Industrial design, manufactured in innodisk Taiwan

Mechanical Drawing

Standard Temp



Wide Temp



Specifications

Form-Factor	mPCIe
Input I/F	PCI Express 2.0
Output I/F	SATA III
Output Connector	SATA 7pin x 2
TDP	1W (3.3V x 320mA)
Dimension (WxLxH)	Standard Temp: 30 x 50.9 x 10.85 mm, Weight: 8.5g Wide Temp: 30 x 50.9 x 10.85 mm, Weight: 8.5g
Temperature	Operation: STD: 0°C ~ +70°C WT: -40°C ~ +85°C Storage: -55°C ~ +95°C
Environment	Vibration: 5G @7~2000Hz, Shock: 50G @ 0.5ms
Notes	



Order information

EMPS-3201-C1
mPCIe to dual SATA III Module

EMPS-3201-W1
mPCIe to dual SATA III Module W/T